

Is there such a thing as an edge IoT platform?

STL Partners & Volt Active Data: Edge IoT platforms webinar 2

31st May 2023

Agenda

1	Introduction	STL	5 mins
2	Is there such a thing as an edge IoT platform?	STL	15 mins
3	Data Processing Characteristics of an Edge IoT Platform	Volt	15 mins
4	Panel discussion and Q&A	STL, Volt & Nearby	25 mins

Agenda

1	Introduction	STL	5 mins
2	Is there such a thing as an edge IoT platform?	STL	15 mins
3	Data Processing Characteristics of an Edge IoT Platform	Volt	15 mins
4	Panel discussion and Q&A	STL, Volt & Nearby	25 mins

UPCOMING WEBINAR SERIES



STL Partners & Volt Active Data Edge IoT platforms webinar series



Verticals and use cases enabling growth

Date & Time: 21 Feb, 4pm GMT

Topic Areas

- Introduction to edge IoT platforms
- Use cases and key verticals



Is there such a thing as an edge IoT platform?

Date & Time: 31 May, 4pm BST

Topic Areas

- Is there a need for a converged edge IoT platform?
- Designing edge IoT platforms



Horizontal or vertical – winning business models in edge IoT

Date & Time: 5 Sep, 4pm BST

Topic Areas

- Edge IoT business models in telecoms
- The role of telcos in edge IoT



What is the role of data analytics in edge IoT?

Date & Time: TBC

Topic Areas

- The role of data analytics in edge IoT
- Optimising data analytics



Webinar 2 – Tuesday 31st May – 4PM BST | 11AM EDT | 8AM PDT



UPCOMING WEBINAR

Edge IoT platforms webinar 2: Is there such a thing as an edge IoT platform?



ANDREW KEENE

Senior Director of Product
Management

Volt Active Data



HEIN MATTHEE

Key Account Director and
Technical Sales

Nearby Computing



DALIA ADIB

Director, Consulting

STL Partners



WILL DAVIES

Consultant

STL Partners

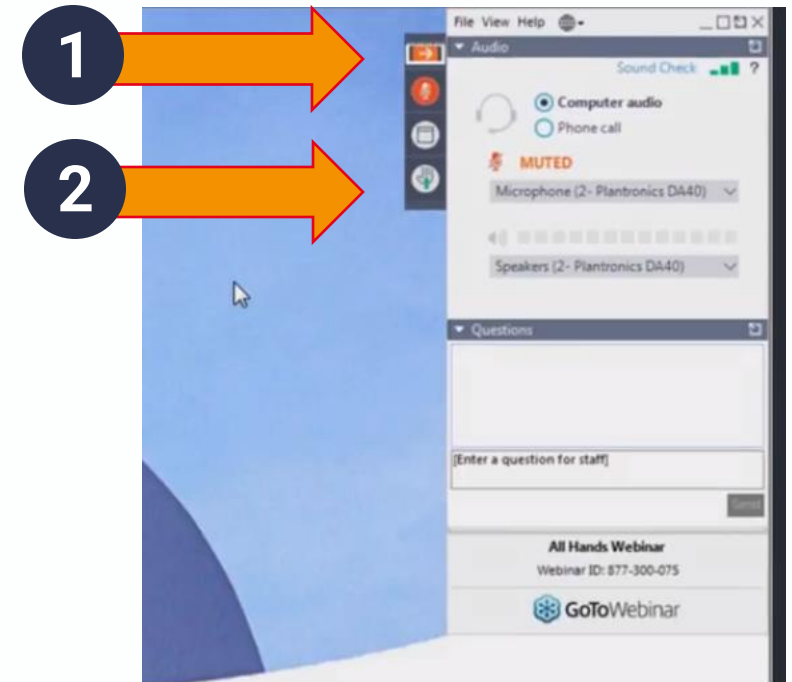


Wednesday 31st May – 4PM BST | 11AM EDT | 8AM PDT

VOLT
ACTIVE DATA

GoToWebinar

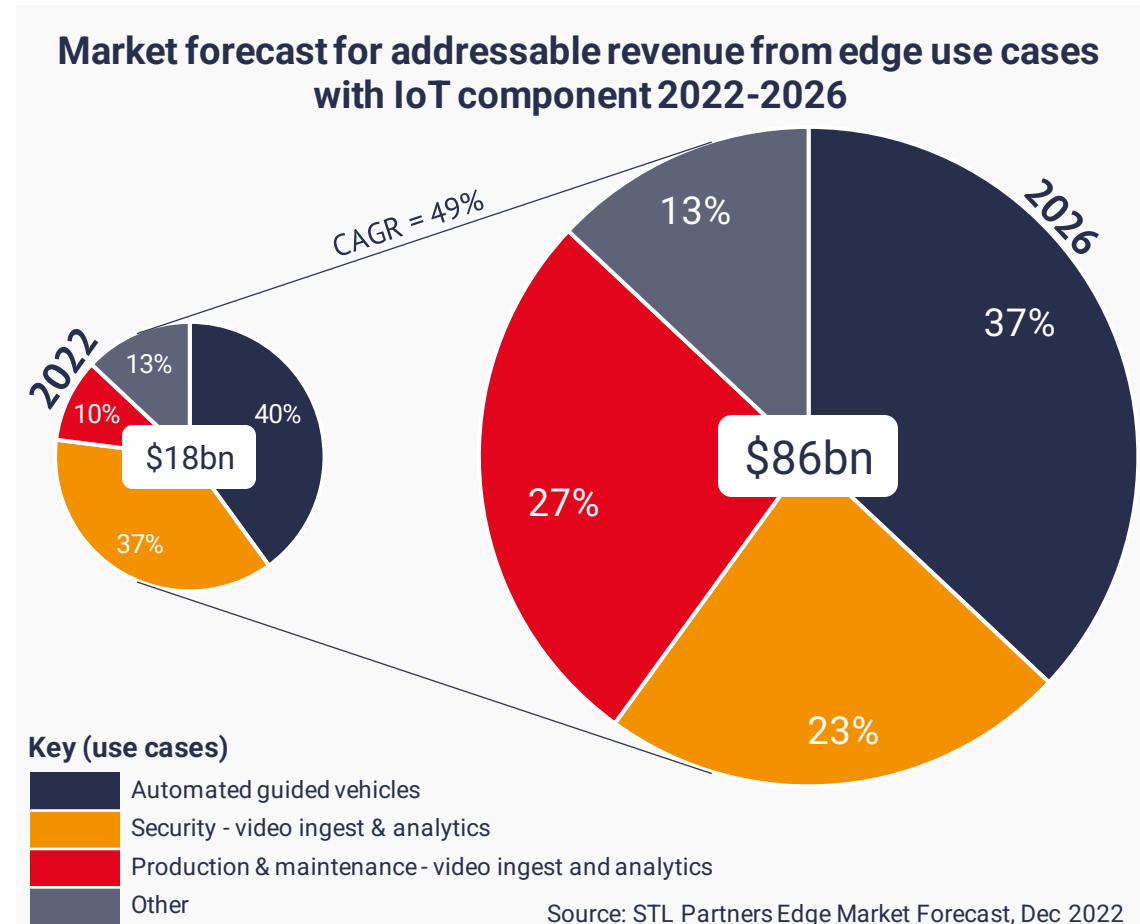
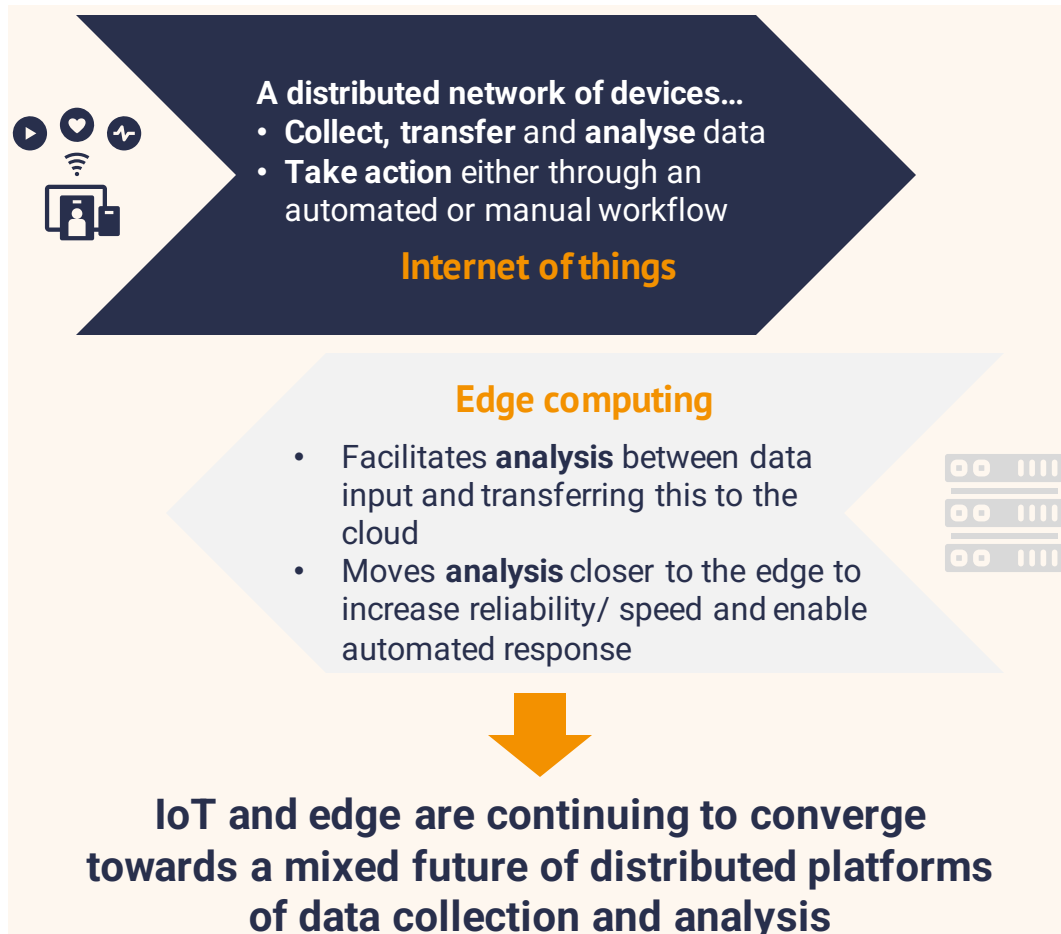
- You're in listen only mode
- If you need us, please type a comment
- Feel free to type questions throughout the session for Q&A at the end
- We'll send you the slides and a recording shortly after the session - do share with colleagues
- On Twitter? Tweet us @STLPartners



Agenda

1	Introduction	STL	5 mins
2	Is there such a thing as an edge IoT platform?	STL	15 mins
3	Data Processing Characteristics of an Edge IoT Platform	Volt	15 mins
4	Panel discussion and Q&A	STL, Volt & Nearby	25 mins

The market for edge-enhanced IoT use cases is projected to grow 5x over the next four years



Edge IoT platforms can enhance use cases that drive profitability for enterprises who adopt them

What is an edge IoT platform?

A platform that allows a large number of connected devices to work automatically and harmoniously together, without compromising on network and ultimately IoT device and application performance.

Edge IoT platforms help enterprises solve business and operational challenges:

Unlock new revenue opportunities



Autonomous
vehicles



Remote patient
monitoring &
care

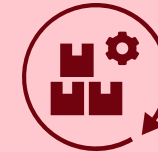


Smart
retail

Increase operational efficiencies



Production &
maintenance:
video ingest &
analytics

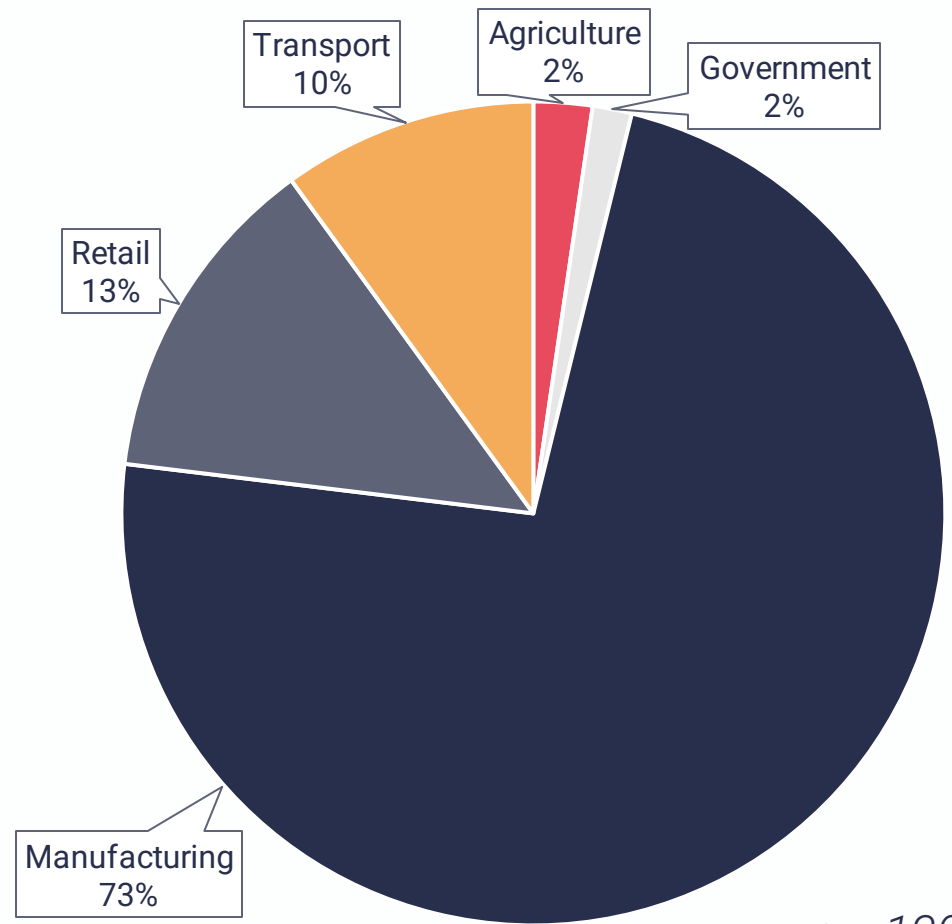


Real-time
inventory
management



IoT analytics for
building
management

Poll from Webinar 1: Which vertical do you think will have deployed the most mature edge IoT platforms by 2026?

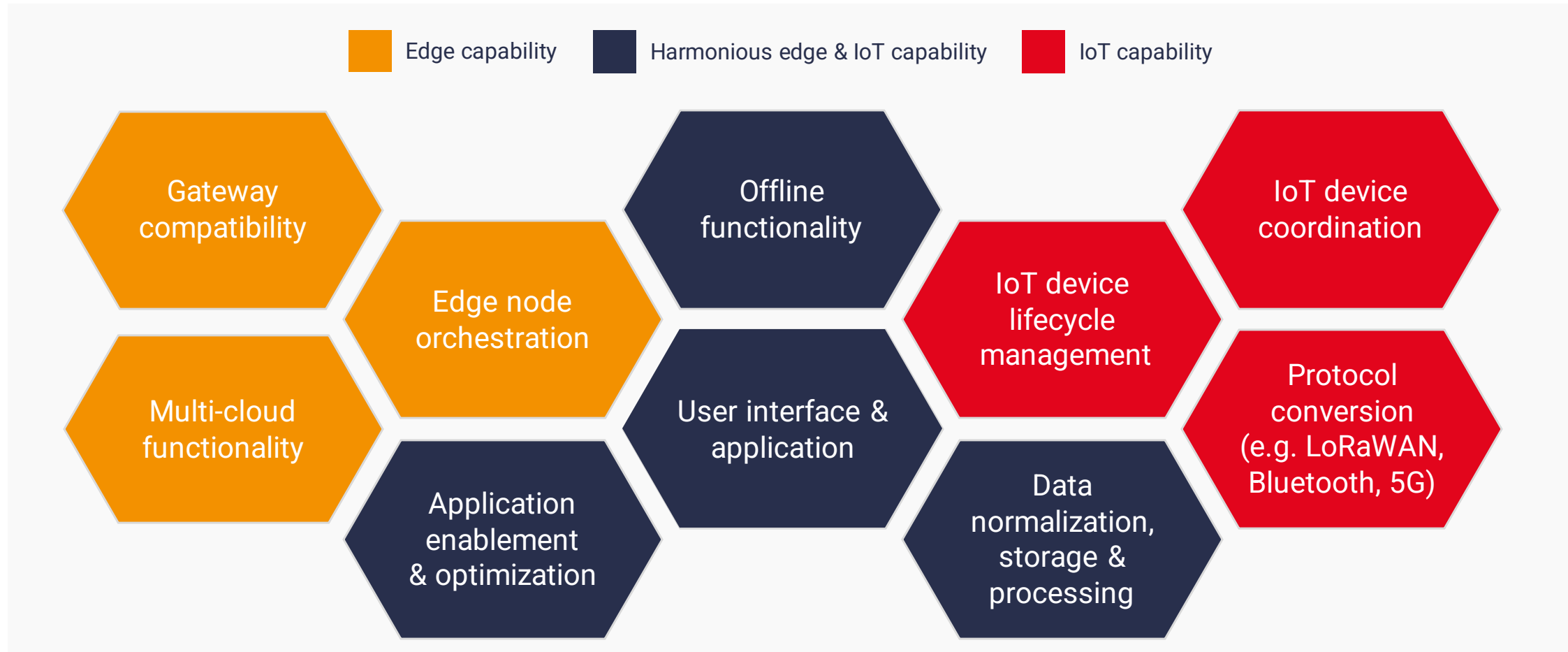


$n = 130$

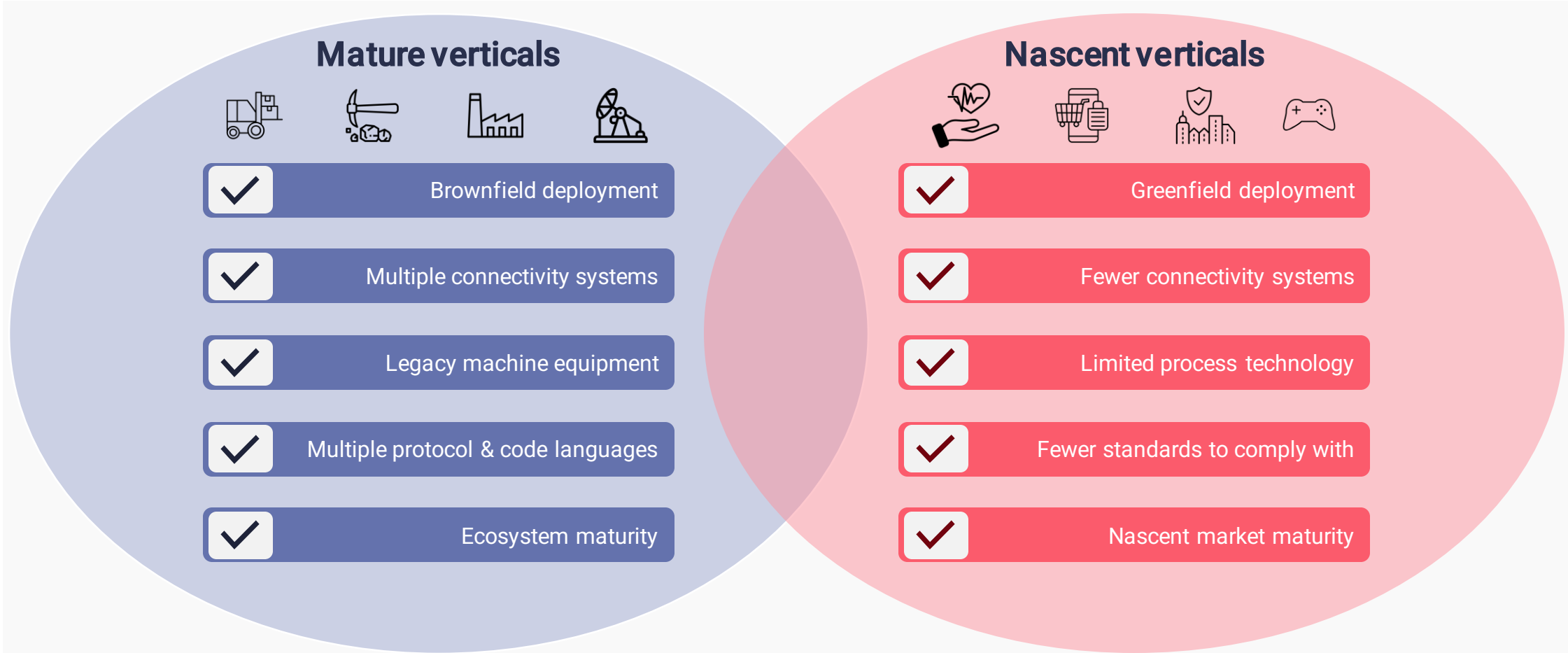
Poll: Where are you on your edge IoT journey?

1. Not considering adopting/providing IoT or edge
2. Considering adopting/providing either IoT or edge separately
3. Considering adopting/providing a single edge IoT solution
4. Deployed/implementing IoT or edge separately
5. Deployed/implementing at least a converged edge IoT solution

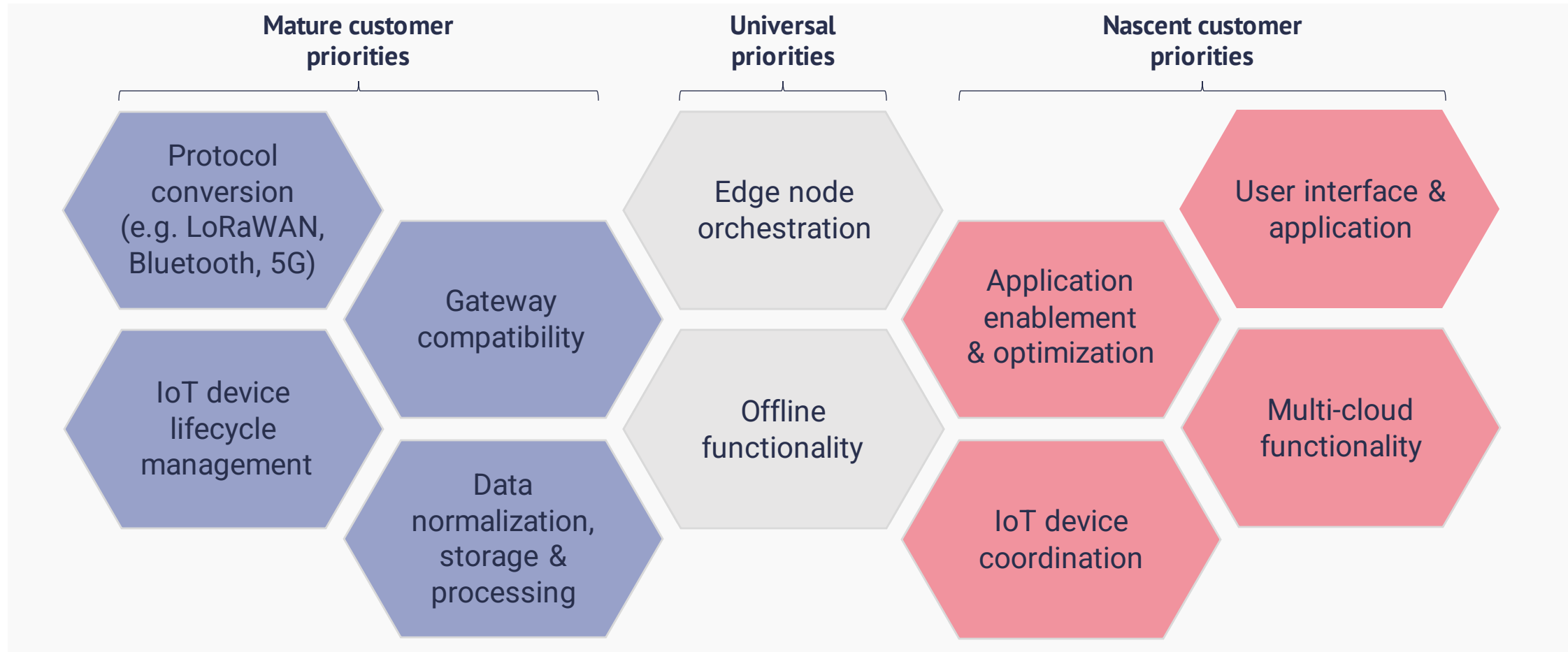
Specialised platforms can maximise value by delivering on harmonious requirements



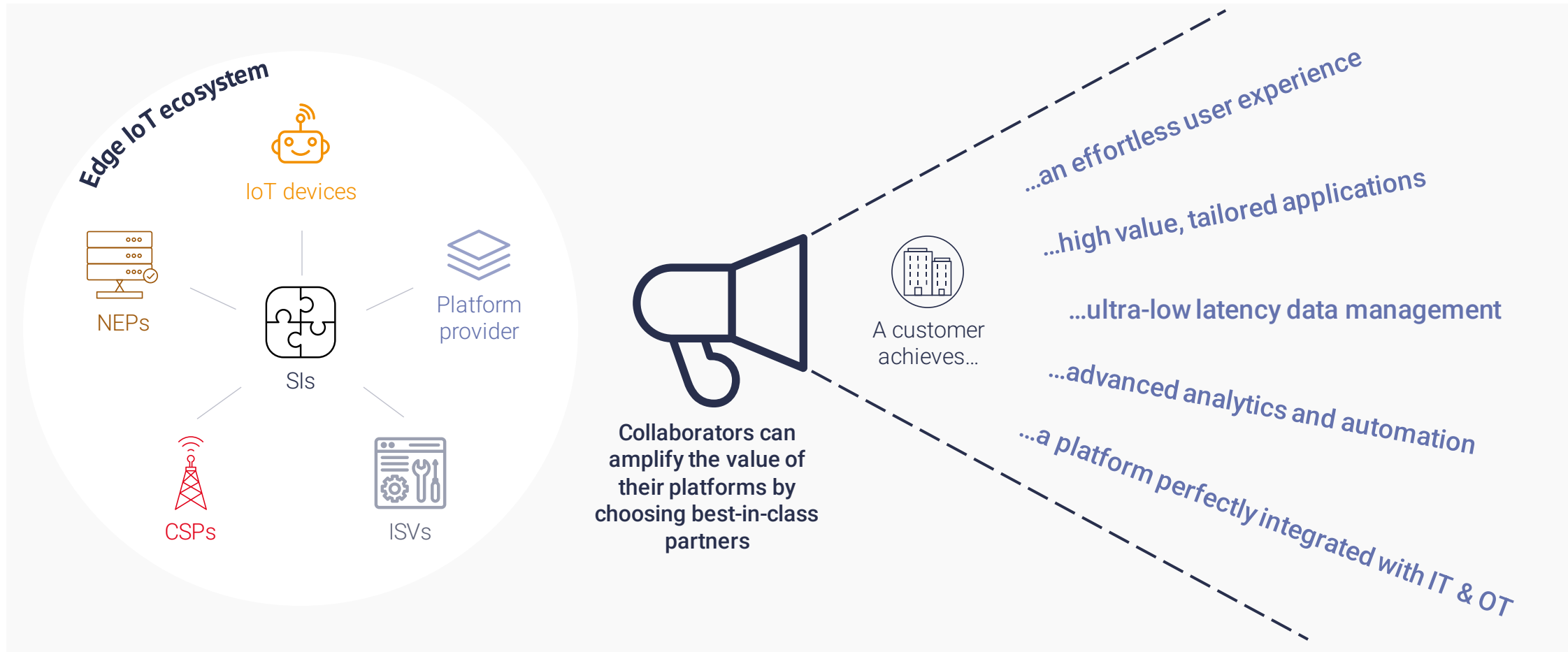
Platform providers must consider the maturity of each customer...



...in order to prioritise different platform capabilities

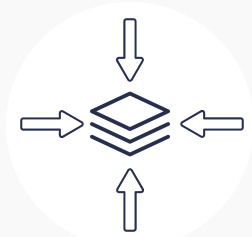


To reach customers, platform providers must collaborate in an increasingly specialised edge IoT ecosystem



Convergence can help platform providers differentiate their platforms to capture value in a crowding marketplace

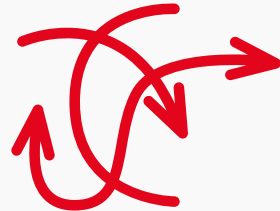
Technical convergence is an imperative for platform providers



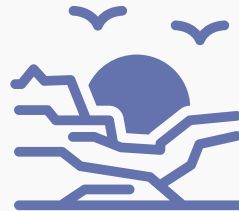
Converged edge IoT platform



Has an effortless
user interface



Manages
complexity



Distributed with an
enterprise-wide view

However, choosing the right name to describe a platform is a challenge

Different customer segments respond better to different names...



'IoT platform' is more
attractive to enterprises



'Edge platform' is more
attractive to telcos



'Edge IoT platform' is
attractive to SIs

Poll: What should we be calling these platforms for edge and IoT?

1. Edge Platform
2. IoT Platform
3. Edge IoT Platform
4. Edge Enhanced IoT Platform
5. Other

Agenda

1	Introduction	STL	5 mins
2	Is there such a thing as an edge IoT platform?	STL	15 mins
3	Data Processing Characteristics of an Edge IoT Platform	Volt	15 mins
4	Panel discussion and Q&A	STL, Volt & Nearby	25 mins



VOLT

ACTIVE DATA

EDGE IOT PLATFORMS WEBINAR

**Data Processing Characteristics
of an Edge IoT Platform**

May 2023

VOLT ACTIVE DATA

- A real-time data processing platform that handles the entire ingest through act process for event-driven data
- Designed for applications where latency and consistency cannot be compromised at scale, and data can never be lost

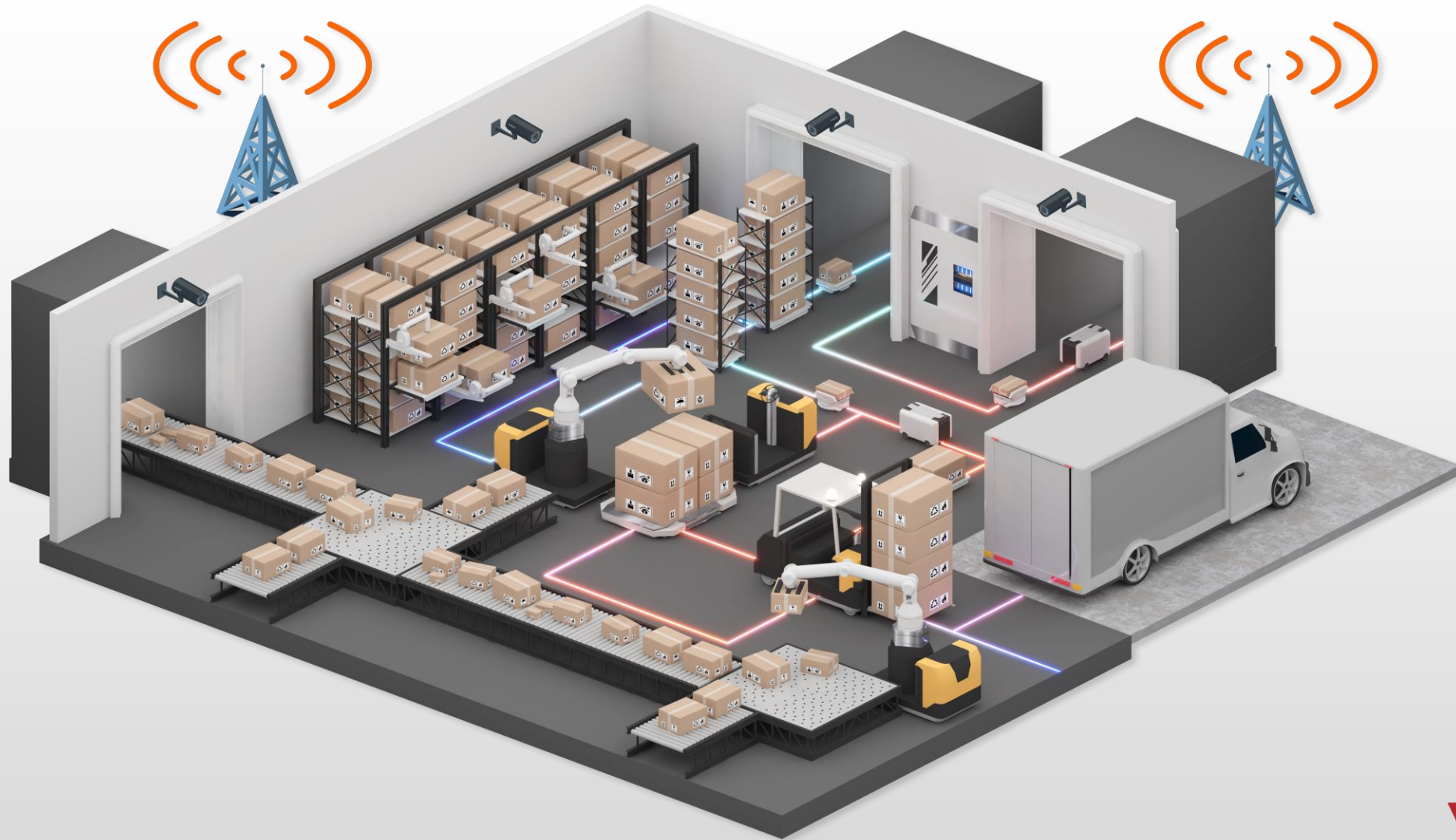




SAMPLE USE CASES

- Telco Charging and Policy
- Fraud & Threat Prevention
- Hyper-Personalization (CX)
- Real-Time ETL & Mediation
- Real Time Private Networks
- Smart Cities - Road Traffic Management
- Smart Grid – IoT Device Management
- Compliance & Regulatory Reporting
- Fleet Management
- **Edge Optimized Federated Decisioning**
- Active Digital Twins

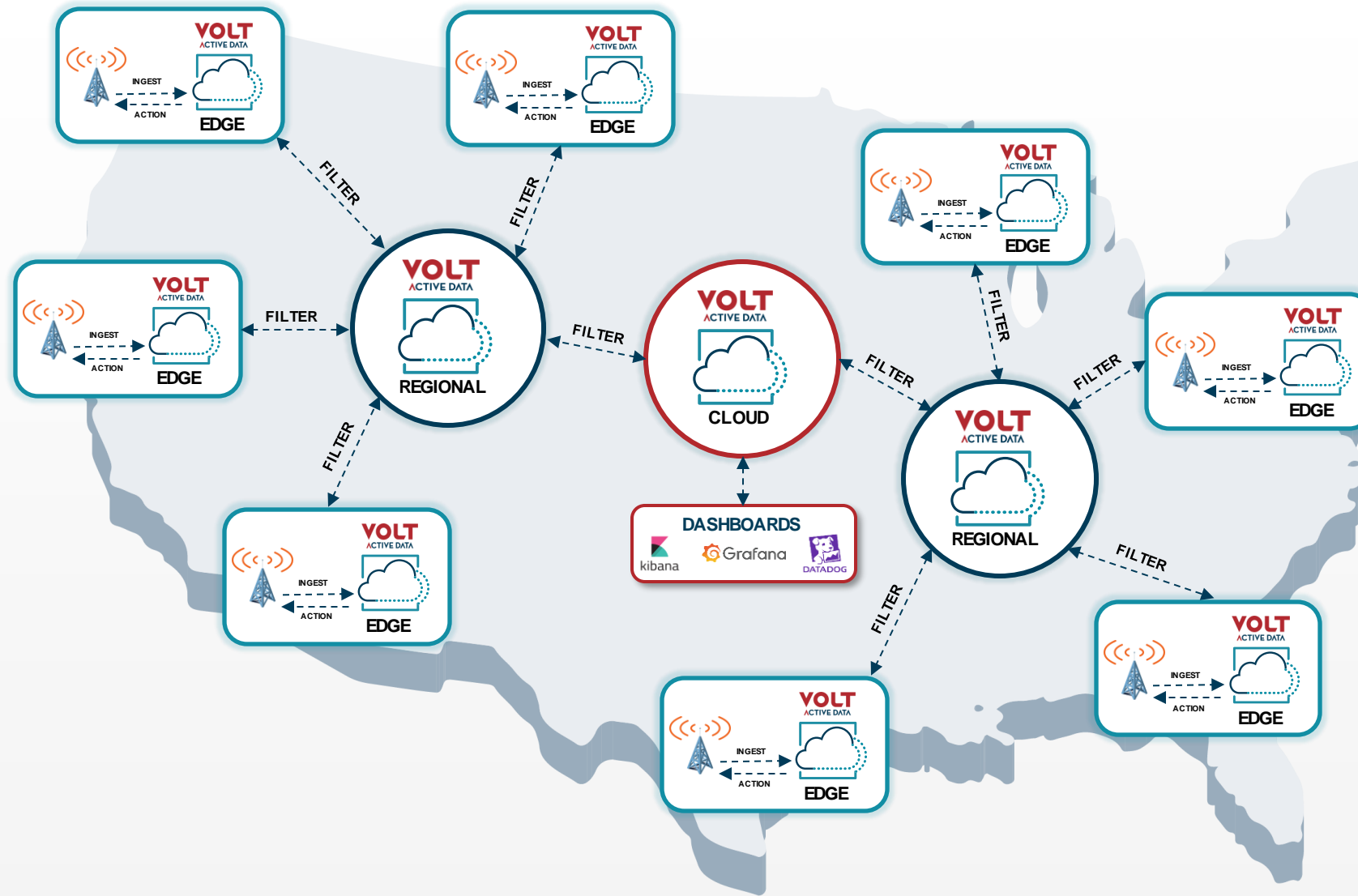
IOT DATA PROCESSING AT THE EDGE



TIERED DATA PLATFORM FOR EDGE IOT



TIERED DATA PLATFORM FOR EDGE IOT



- Tiered concentration is a very meaningful approach as leaf tiers can satisfy the latency SLAs and then use the higher levels for more visibility purposes
- Helps to save a lot of data transmission/storage costs by filtering out the useful data close to the source and at each level.

Agenda

1	Introduction	STL	5 mins
2	Is there such a thing as an edge IoT platform?	STL	15 mins
3	Data Processing Characteristics of an Edge IoT Platform	Volt	15 mins
4	Panel discussion and Q&A	STL, Volt & Nearby	25 mins